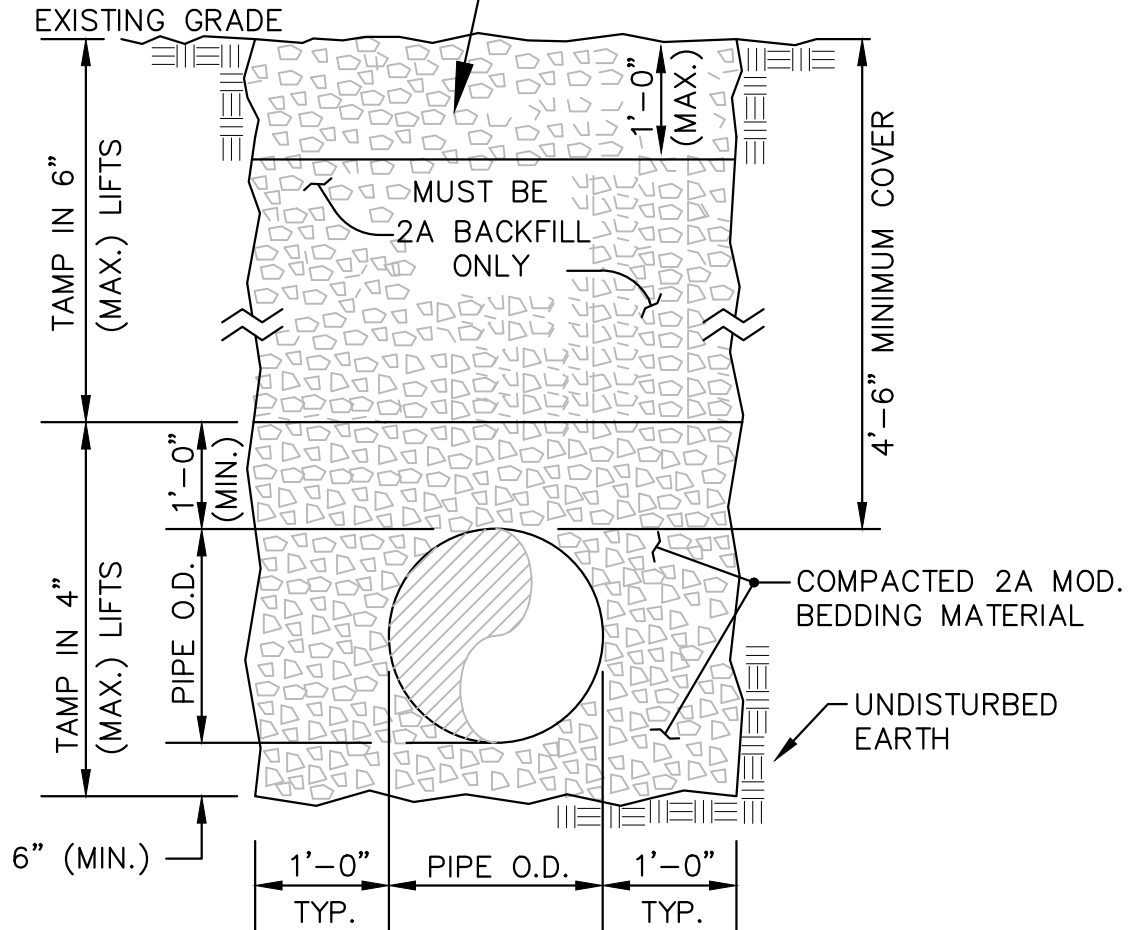


RESTORE SURFACE TO MATCH
PRECONSTRUCTION CONDITIONS
(TOP SOIL, SHALE, SEED, ETC.,
AS REQUIRED)



**TRENCH DETAIL IN
UNIMPROVED AREAS**

N.T.S.

HAZLETON CITY AUTHORITY-
WATER DEPARTMENT

400 EAST ARTHUR GARDNER PARKWAY
CITY OF HAZLETON, LUZERNE COUNTY, PENNSYLVANIA

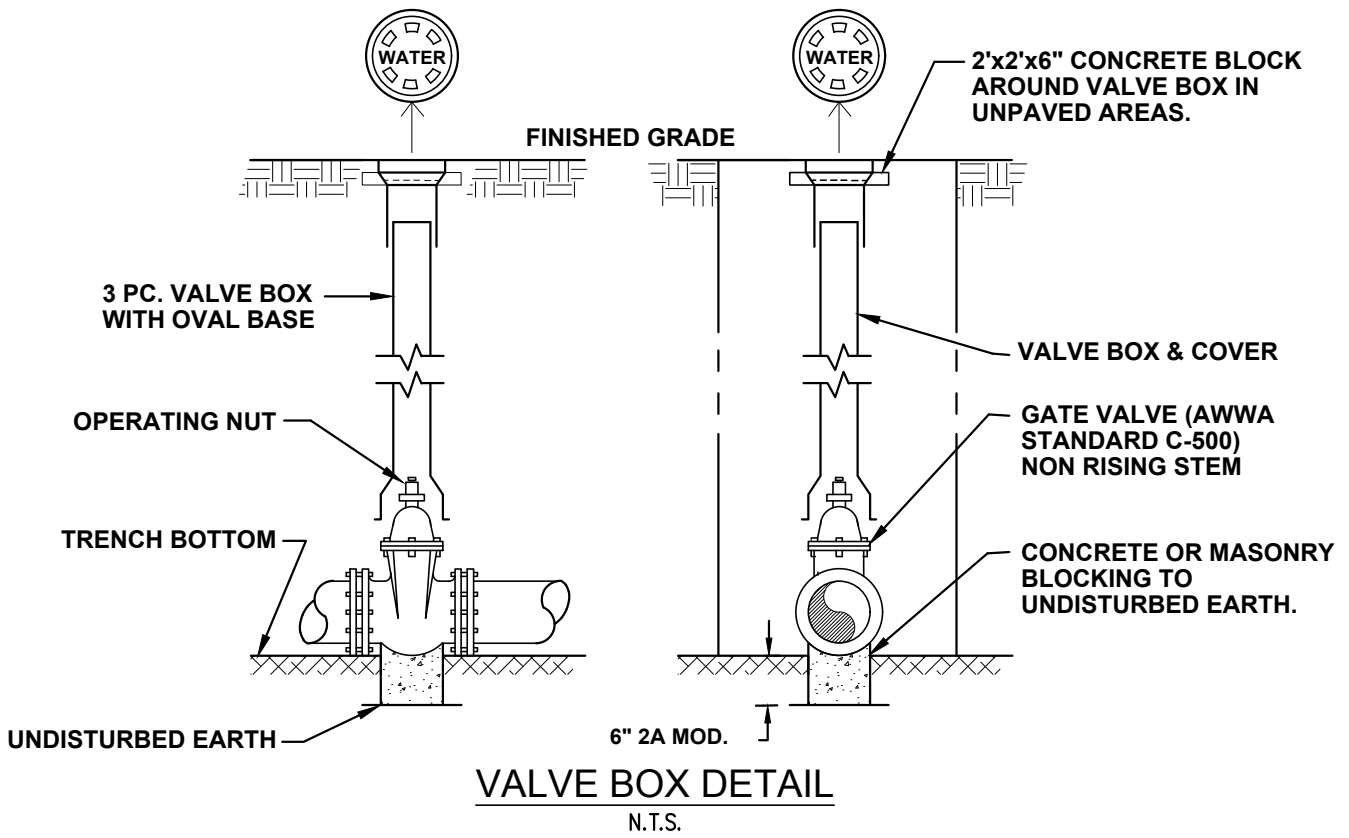


DRAWING TITLE:

SHEET NO: SK-1

CONSTRUCTION DETAIL

PIPE TRENCH IN UNIMPROVED AREA



HAZLETON CITY AUTHORITY-
WATER DEPARTMENT

400 EAST ARTHUR GARDNER PARKWAY
CITY OF HAZLETON, LUZERNE COUNTY, PENNSYLVANIA

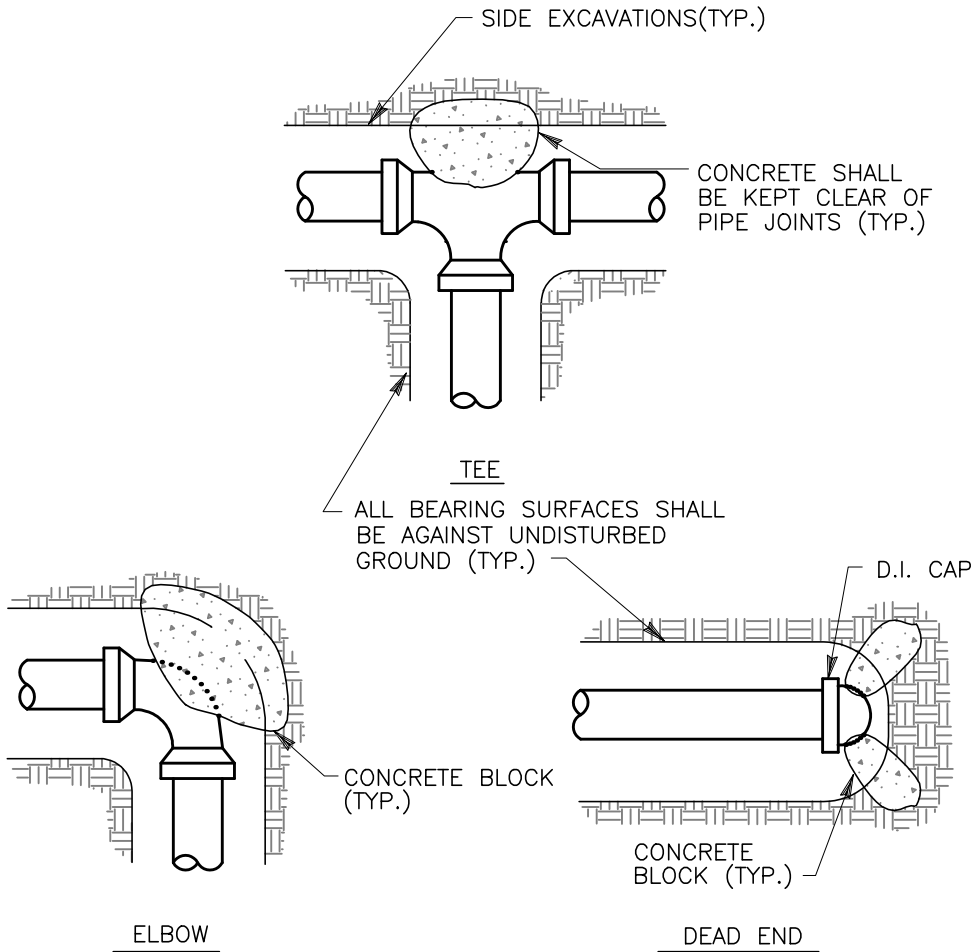


DRAWING TITLE:

SHEET NO: SK-2

CONSTRUCTION DETAIL

VALVE BOX DETAIL



BEARING AREAS EACH DIRECTION OF THRUST IN SQUARE FEET				
PIPE SIZE	TEES & DEADENDS	90° ELBOWS	45° ELBOW CROSSES IN DIRECTION OF FLOW	22-1/2° ELBOWS
6"	4.0	5.5	3.0	2.0
8"	7.0	9.5	5.0	3.0
12"	11.0	12.0	8.25	4.25

TYP. THRUST BLOCK INSTALLATION DETAIL

N.T.S.

HAZLETON CITY AUTHORITY-
WATER DEPARTMENT

400 EAST ARTHUR GARDNER PARKWAY
CITY OF HAZLETON, LUZERNE COUNTY, PENNSYLVANIA

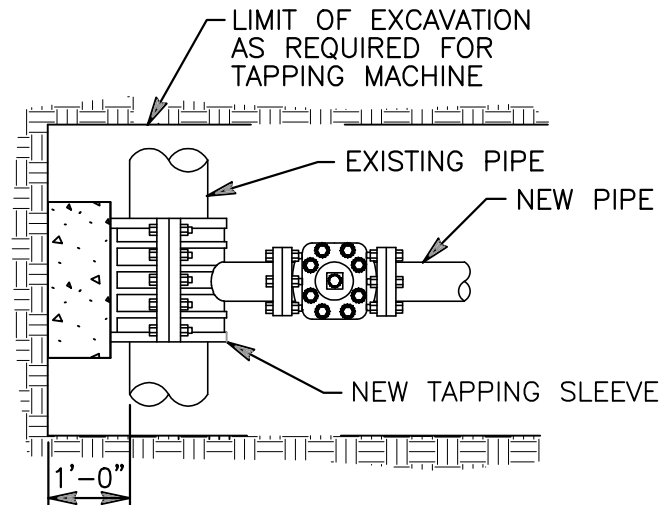


DRAWING TITLE:

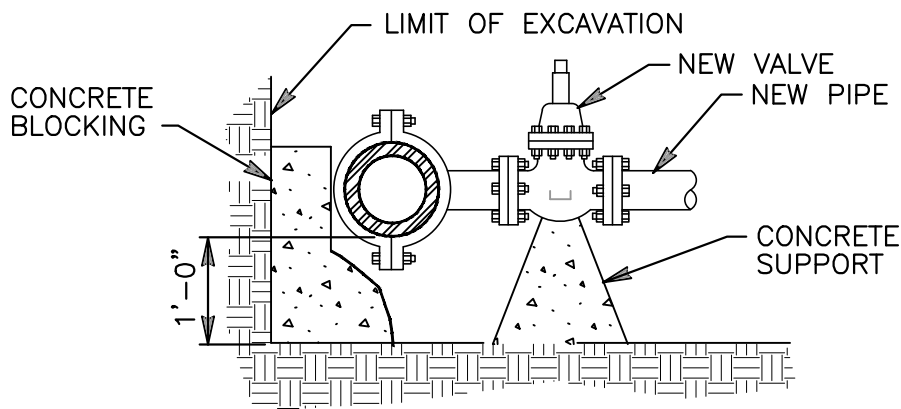
SHEET NO: SK-3

CONSTRUCTION DETAIL

THRUST BLOCK INSTALLATION DETAIL



PLAN VIEW



SECTIONAL VIEW

TAPPING SLEEVE AND VALVE
INSTALLATION DETAIL

N.T.S.

HAZLETON CITY AUTHORITY-
WATER DEPARTMENT

400 EAST ARTHUR GARDNER PARKWAY
CITY OF HAZLETON, LUZERNE COUNTY, PENNSYLVANIA

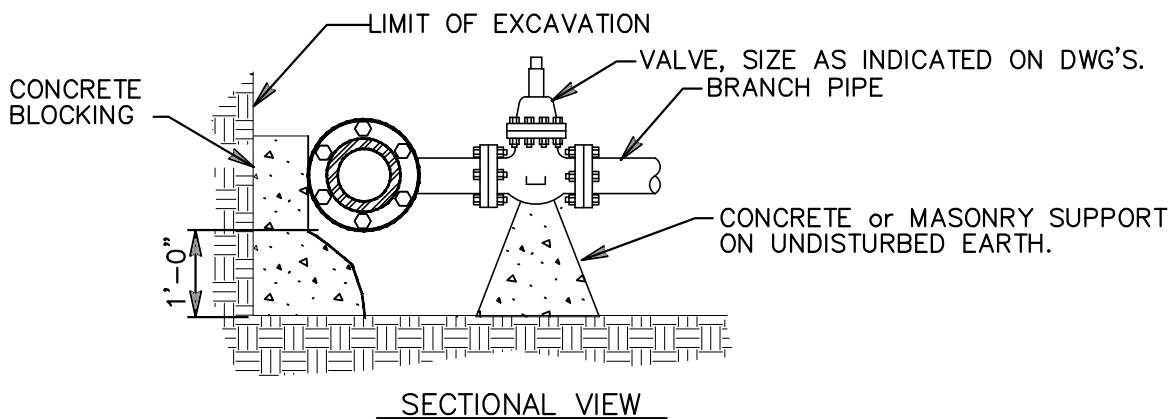
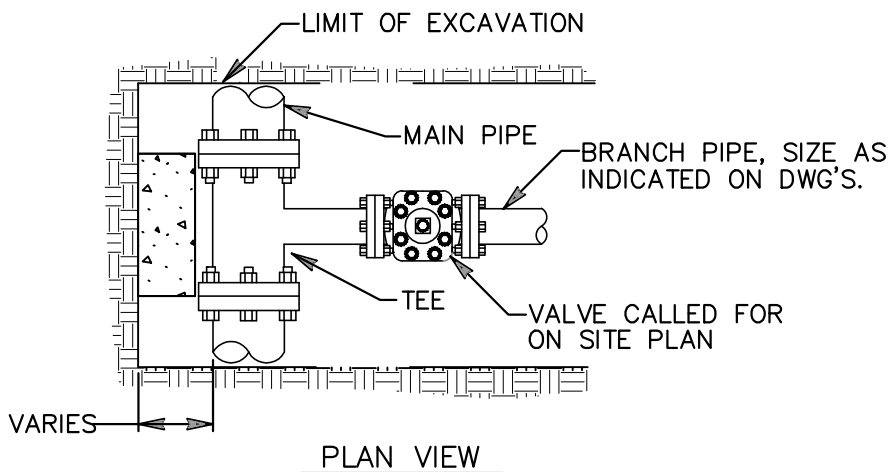


DRAWING TITLE:

SHEET NO: SK-4

CONSTRUCTION DETAIL

TAPPING SLEEVE AND VALVE DETAIL



**TYP. BRANCH LINE VALVE
INSTALLATION DETAIL**

N.T.S.

HAZLETON CITY AUTHORITY-
WATER DEPARTMENT

400 EAST ARTHUR GARDNER PARKWAY
CITY OF HAZLETON, LUZERNE COUNTY, PENNSYLVANIA



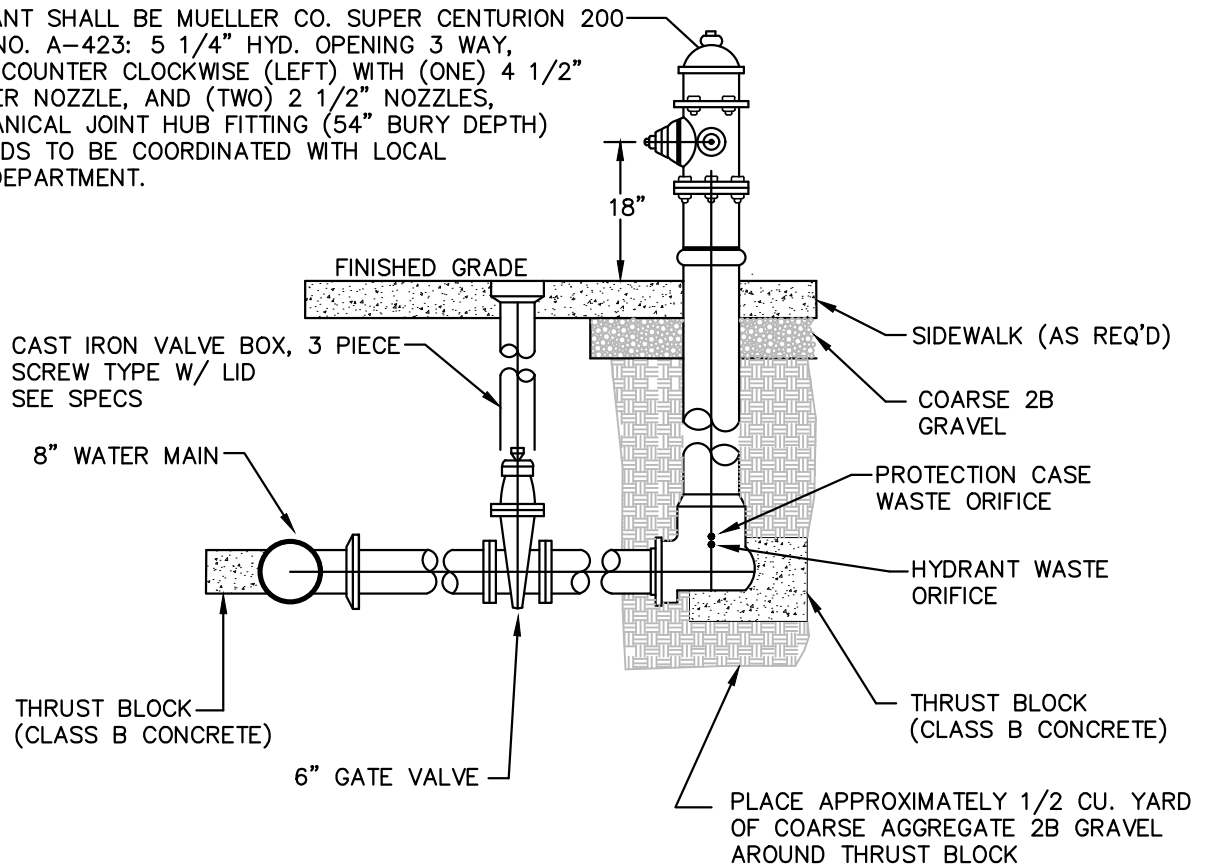
DRAWING TITLE:

SHEET NO: SK-5

CONSTRUCTION DETAIL

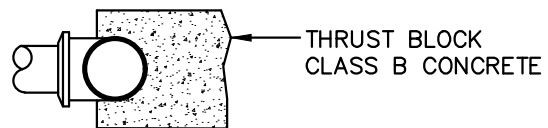
BRANCH LINE VALVE INSTALLATION DETAIL

HYDRANT SHALL BE MUELLER CO. SUPER CENTURION 200
 CAT. NO. A-423: 5 1/4" HYD. OPENING 3 WAY,
 OPEN COUNTER CLOCKWISE (LEFT) WITH (ONE) 4 1/2"
 PUMPER NOZZLE, AND (TWO) 2 1/2" NOZZLES,
 MECHANICAL JOINT HUB FITTING (54" BURY DEPTH)
 THREADS TO BE COORDINATED WITH LOCAL
 FIRE DEPARTMENT.



NOTES:

1. ORIENTATION OF NOZZLES TO BE COORDINATED WITH LOCAL FIRE AUTHORITY.
2. ALL WATER SUPPLY PIPING SHALL BE PROTECTED BY A MINIMUM GROUND COVER OF 4'-6" ABOVE THE TOP OF PIPE.



TYP. FIRE HYDRANT DETAIL

N.T.S.

HAZLETON CITY AUTHORITY-
 WATER DEPARTMENT

400 EAST ARTHUR GARDNER PARKWAY
 CITY OF HAZLETON, LUZERNE COUNTY, PENNSYLVANIA

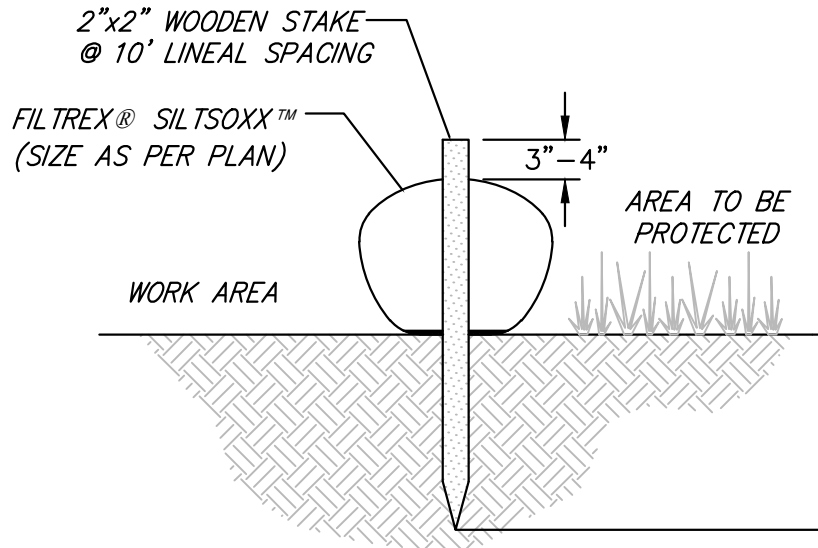


DRAWING TITLE:

SHEET NO: SK-6

CONSTRUCTION DETAIL

TYPICAL FIRE HYDRANT DETAIL



<i>FILTER FABRIC</i>	<i>FILTREXX SILTSOXX EQUIVALENCY</i>
<i>18" FILTER FABRIC FENCE</i>	<i>12" FILTREXX SILTSOXX</i>
<i>30" FILTER FABRIC FENCE</i>	<i>18" FILTREXX SILTSOXX</i>
<i>36" SUPER FILTER FABRIC FENCE</i>	<i>24" FILTREXX SILTSOXX</i>

NOTES:

1. ALL MATERIAL TO MEET FILTREXX SPECIFICATIONS.
2. SILTSOXX COMPOST/SOIL/ROCK/SEED FILL TO MEET APPLICATION REQUIREMENTS.
3. SILTSOXX DEPICTED IS FOR MINIMUM SLOPES. GREATER SLOPES MAY REQUIRED LARGER SOCKS.
4. COMPOST MATERIAL TO BE DISPERSED ON SITE.

*FILTREX® SILTSOXX™
DETAIL*

**HAZLETON CITY AUTHORITY-
WATER DEPARTMENT**

400 EAST ARTHUR GARDNER PARKWAY
CITY OF HAZLETON, LUZERNE COUNTY, PENNSYLVANIA

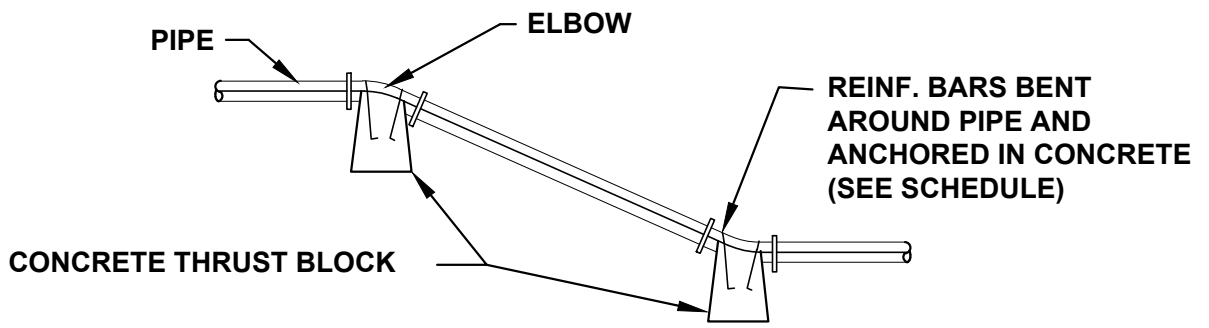


DRAWING TITLE:

SHEET NO: SK-7

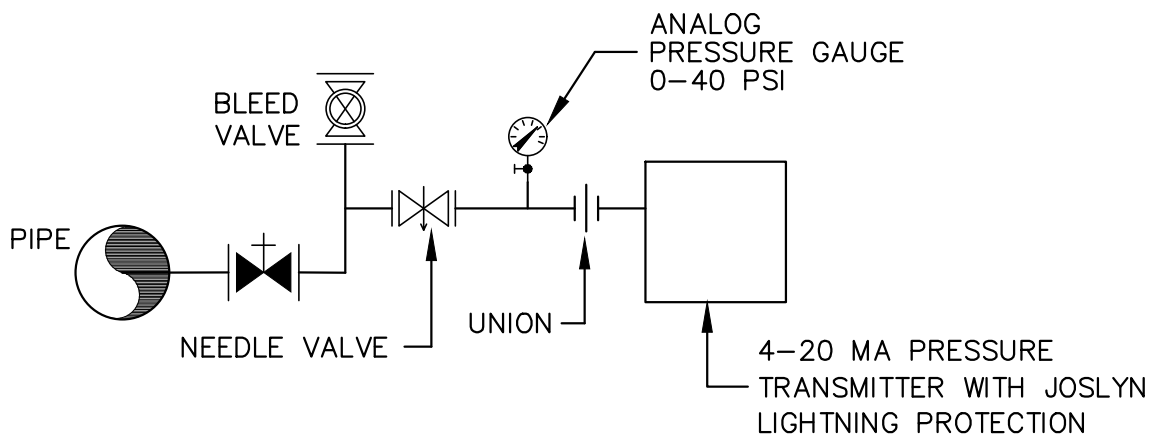
CONSTRUCTION DETAIL

E&S FILTER SOX DETAIL



VERTICAL OFFSET THRUST BLOCK DETAIL

N.T.S.



TYPICAL ELECTRONIC LEVEL PRESSURE TRANSMITTER

N.T.S.

HAZLETON CITY AUTHORITY-
WATER DEPARTMENT

400 EAST ARTHUR GARDNER PARKWAY
CITY OF HAZLETON, LUZERNE COUNTY, PENNSYLVANIA



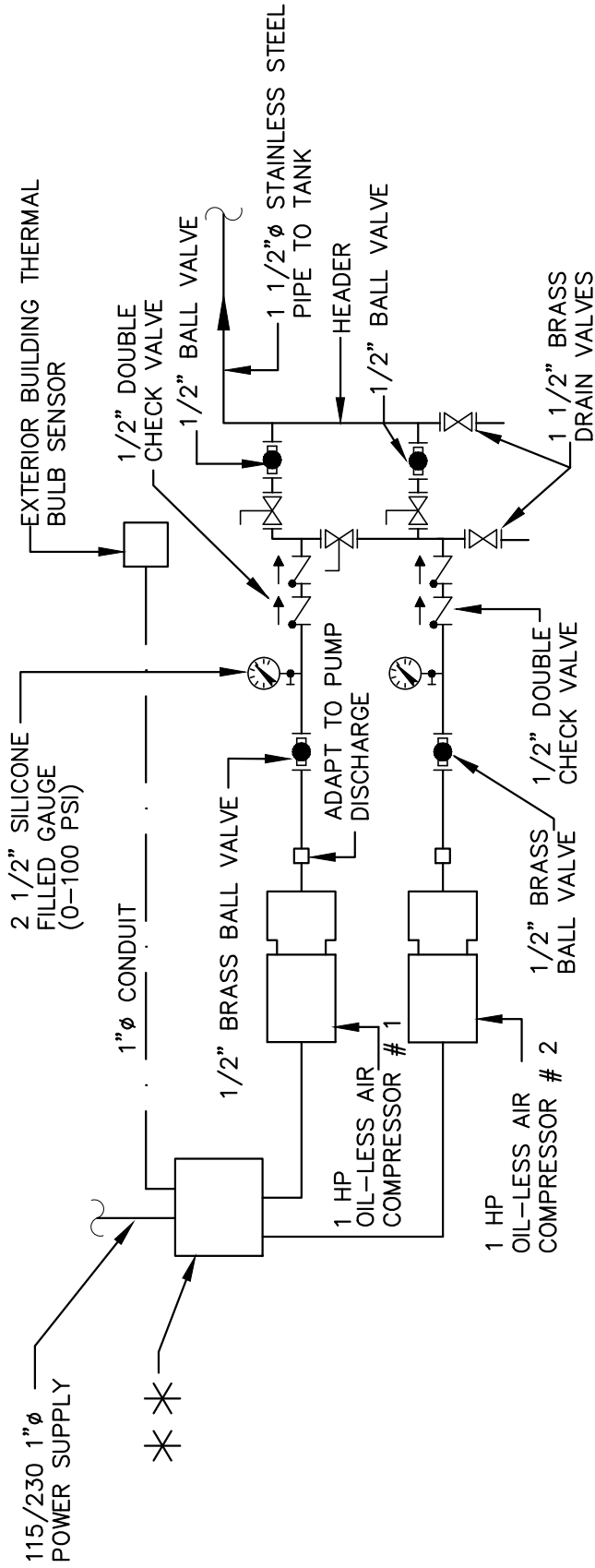
DRAWING TITLE:

SHEET NO: SK-9

CONSTRUCTION DETAIL

ELECTRONIC LEVEL PRESSURE TRANSMITTER

*
*
AUTOMATIC CONTROL BOX WITH MANUAL
COMPRESSOR SELECTION SWITCH AND
DRY CONTACTS FOR CONTROL SYSTEM
MONITORING. PROVIDE INDICATING LIGHTS
FOR ON/OFF INDICATION OF EACH COMPRESSOR



VALVE HOUSE ICE MELTING SCHEMATIC

N.T.S.

HAZLETON CITY AUTHORITY-
WATER DEPARTMENT

400 EAST ARTHUR GARDNER PARKWAY
CITY OF HAZLETON, LUZERNE COUNTY, PENNSYLVANIA

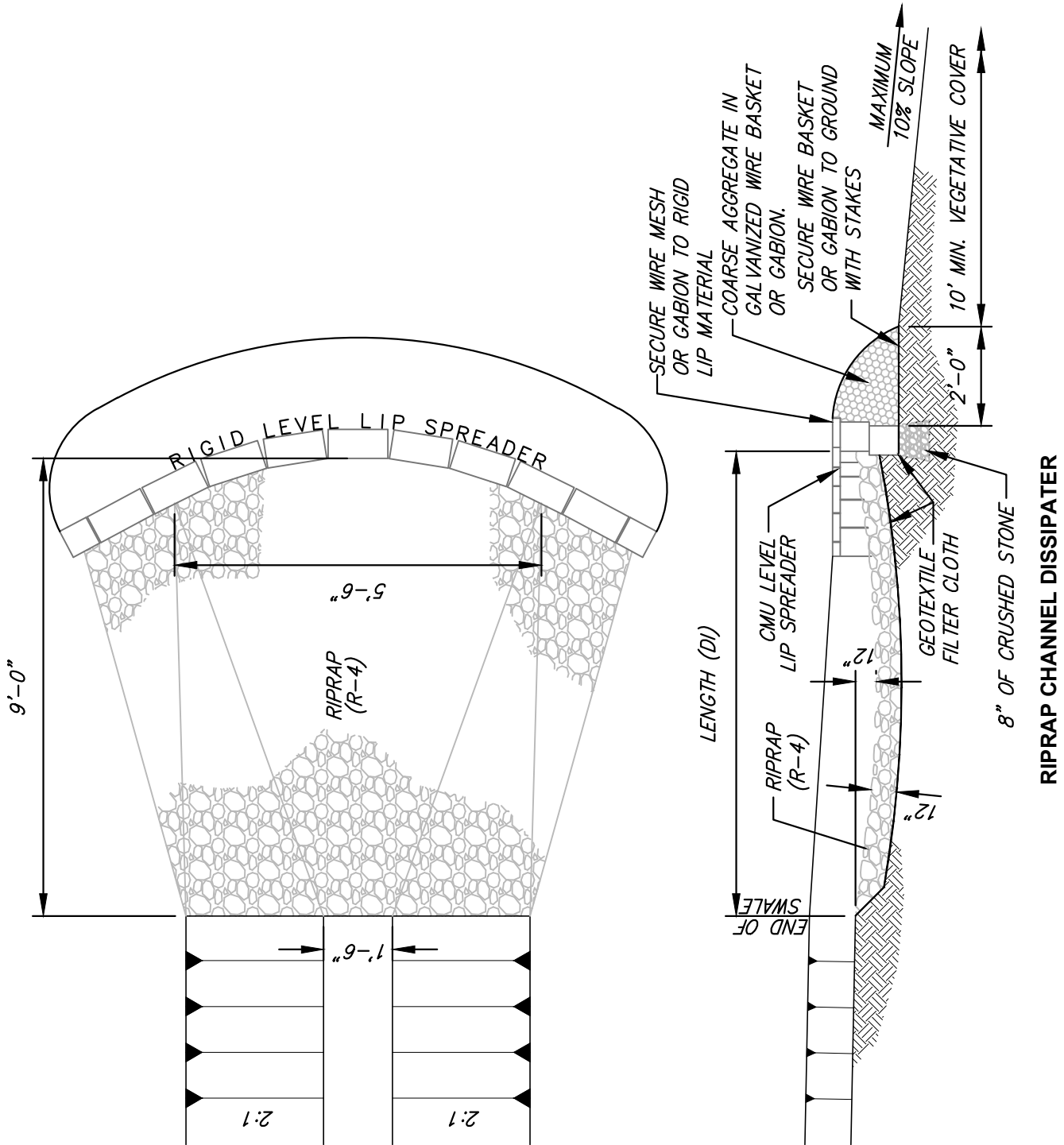


DRAWING TITLE:

SHEET NO: SK-10

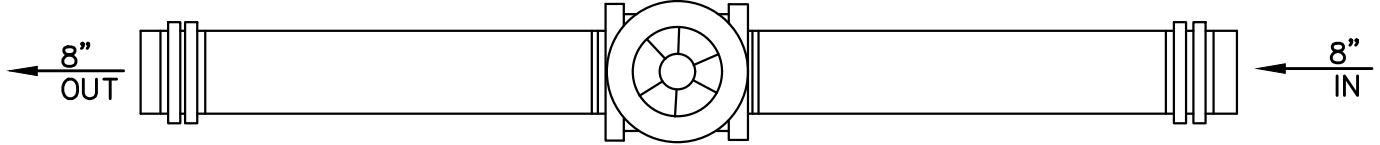
CONSTRUCTION DETAIL

VALVE HOUSE ICE MELTING SCHEMATIC



RIPRAP CHANNEL DISSIPATER

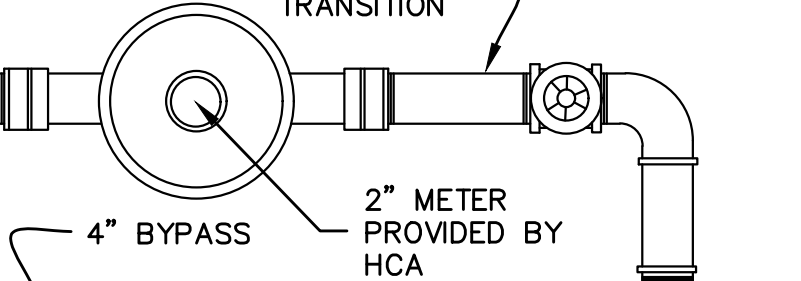
8" FIRE SERVICE



LOCK VALVE OPEN

3"x4" TRANSITION

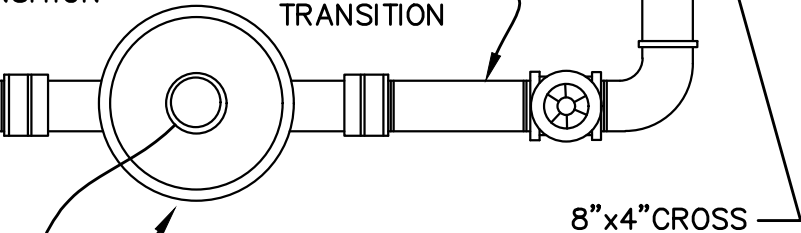
3"x4" TRANSITION



NORMALLY CLOSED

3"x4" TRANSITION

3"x4" TRANSITION



8"x4" CROSS

8"x4" CROSS

4" GATE VALVE
TYPICAL FOR (5)

4" METER
PROVIDED BY
HCA

WIRE TO REMOTE READER
MOUNTED ON STAND RUN INSIDE
TUBE.

HAZLETON CITY AUTHORITY WATER DEPARTMENT METER DETAIL

N.T.S.

HAZLETON CITY AUTHORITY-
WATER DEPARTMENT

400 EAST ARTHUR GARDNER PARKWAY
CITY OF HAZLETON, LUZERNE COUNTY, PENNSYLVANIA

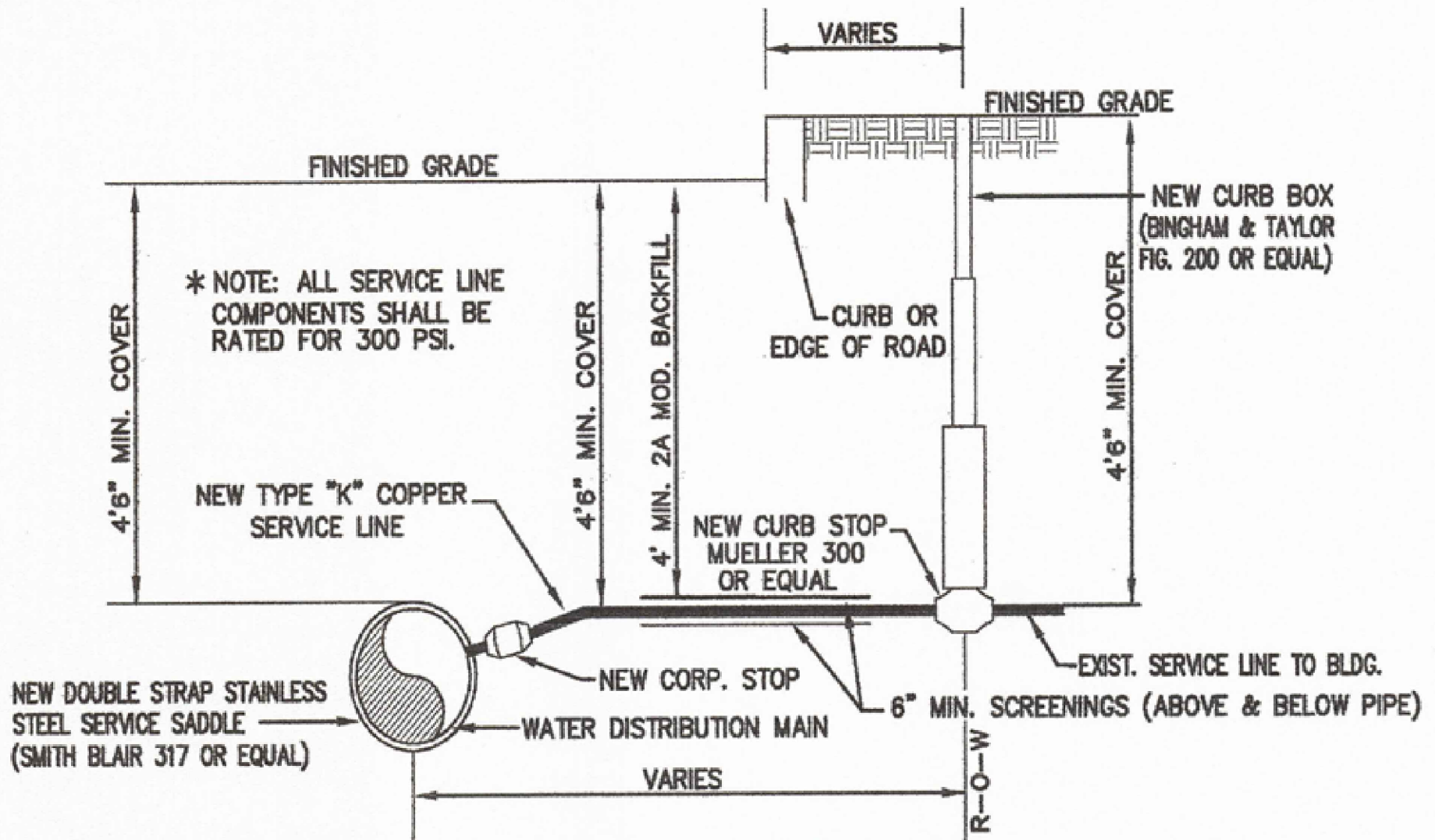


DRAWING TITLE:

SHEET NO: SK-12

CONSTRUCTION DETAIL

GENERAL METER PIPING
(FINAL ARRANGEMENT BASED ON SPECIFIC CUSTOMER
REQUIREMENTS)



TYPICAL SERVICE CONNECTION DETAIL

N.T.S.

HAZLETON CITY AUTHORITY-
 WATER DEPARTMENT
 400 EAST ARTHUR GARDNER PARKWAY
 CITY OF HAZLETON, LUZERNE COUNTY, PENNSYLVANIA



DRAWING TITLE: CONSTRUCTION DETAIL
 SHEET NO: SK-13
 Water Service Connection Detail